

KADRU

— 4000 DPI Gaming Mouse

SOFTWARE MANUAL

Technical specifications

Kadru's buttons*

1. Left button
2. Right button
3. Scroll & wheel button
4. DPI button
5. Forward button
6. Backward button

Compatibility Windows 7 / 8 / 8.1 / 10

Sensor optical AVAGO 3050

Resolution 250 - 4000 DPI

Buttons 6

Internal memory 64kb

Polling rate 250 - 500 - 1000 Hz

Acceleration 20 G

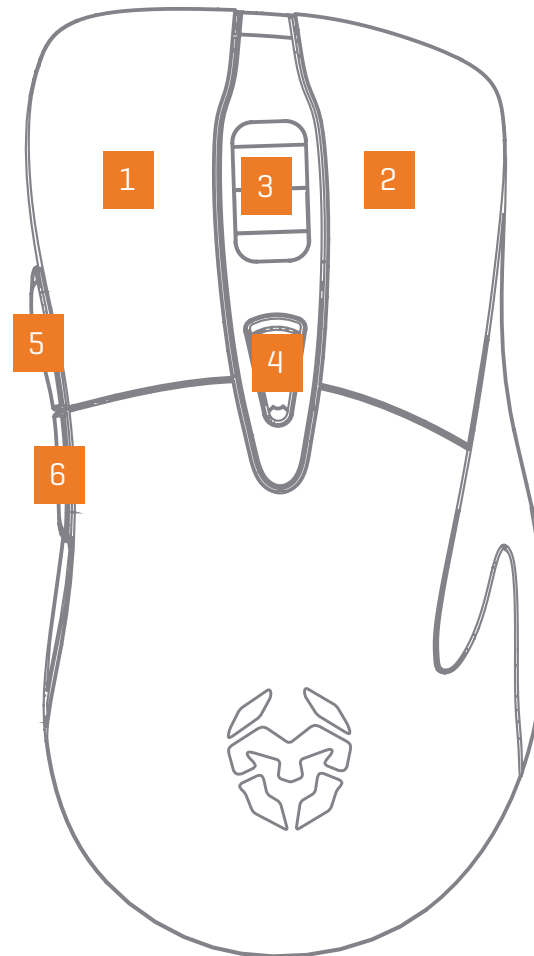
Speed 60 inches / sec

Cable length 150 cm ± 10 cm

Interface USB

Dimensions 130 x 65 x 45 mm

Weight 160 ± 5 gr



Kadru Software Manual

INDEX

Technical specification

*Install the software to assign different functions to each button

INDEX

System requirements

Software installation

System requirements

1. Operating system:
Windows 7 / Windows 8 / Windows 8.1 / Windows 10
2. Free USB 2.0 / 3.0 port.
3. Software installation.
4. 50MB free hard disk space.

Software installation

1. Plug KROM KADRU USB connector to a USB port of your PC.
2. Download the software from **www.kromgaming.com**
 - 2.1 Connect to the internet and enter **www.kromgaming.com**
 - 2.2 Into the product sheet right side menu [Downloads] click on "DRIVERS".
 - 2.3 In this link you can download the Software.
3. Double click "**setup.exe**" to start the installation program.
4. Select the folder to save the software and click "**Next**" to continue.
5. Installation runs automatically: click "**Finish**" to complete the installation and restart your PC [in case software prompted you to].

Basic settings

- Button assignment

INDEX

- Basic settings

- Button assignment



You can assign to any Kadru button another's function:

1. Open Key Settings' dropdown menu and select the button you want to change its function.
2. Choose the function you want to apply to the selected button.

You can apply any of the dropdown menu highlighted functions to any of Kadru's 6 buttons.

Basic settings

- DPI switch

INDEX

- Basic settings

- DPI switch



You can assign DPI switch function to any Kadru button:

1. Open Key Settings' dropdown menu and select the button you want to assign the function.
2. Choose which DPI switch function's exact action you want to run when pressing the selected button: **DPI+** | **DPI -** | **DPI Loop** | **Shift DPI**

Basic settings

• RGB On/Off

Kadru Software Manual

INDEX

Basic settings

• RGB On/Off



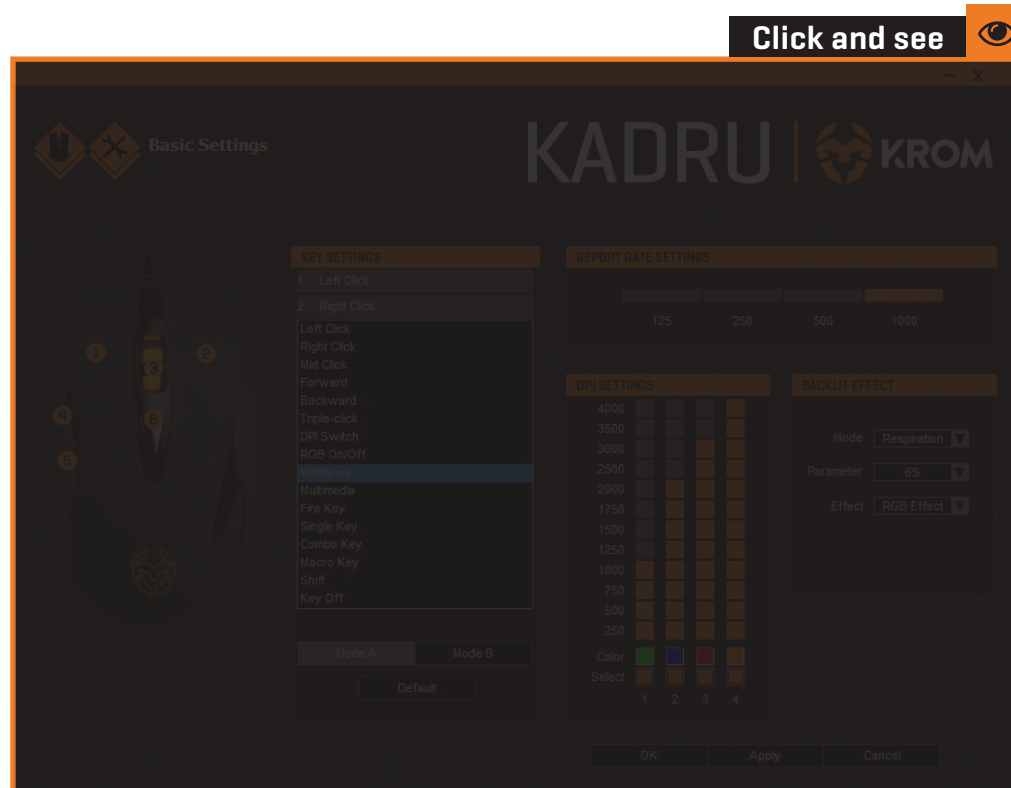
You can assign RGB ON/OFF function to any Kadru button:

1. Open Key Settings' dropdown menu and select the button you want to assign the RGB ON/OFF function.

The assigned button will turn on/off Kadru's RGB illumination.

Functions

• Windows function

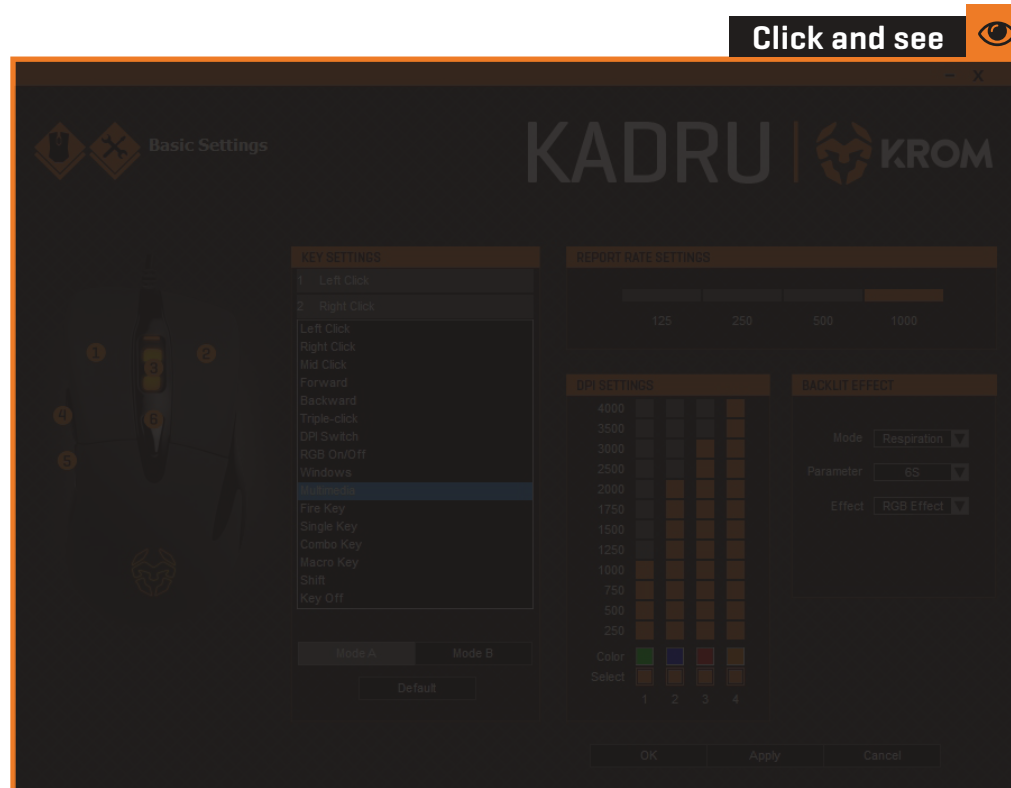


Assign a Windows function to any Kadru button by choosing a key in the dropdown menu into the Key Settings menu.

Click on the Windows option to open a dialog box where you can choose which Windows function should run the selected button. Once chosen, click Ok to save the change.

Functions

• Multimedia function



Assign a multimedia function to any Kadru button by choosing a key in the dropdown menu into the Key Settings menu.

Click on the Multimedia option to open a dialog box where you can choose which multimedia function should run the selected button. Once chosen, click Ok to save the change.

Kadru Software Manual

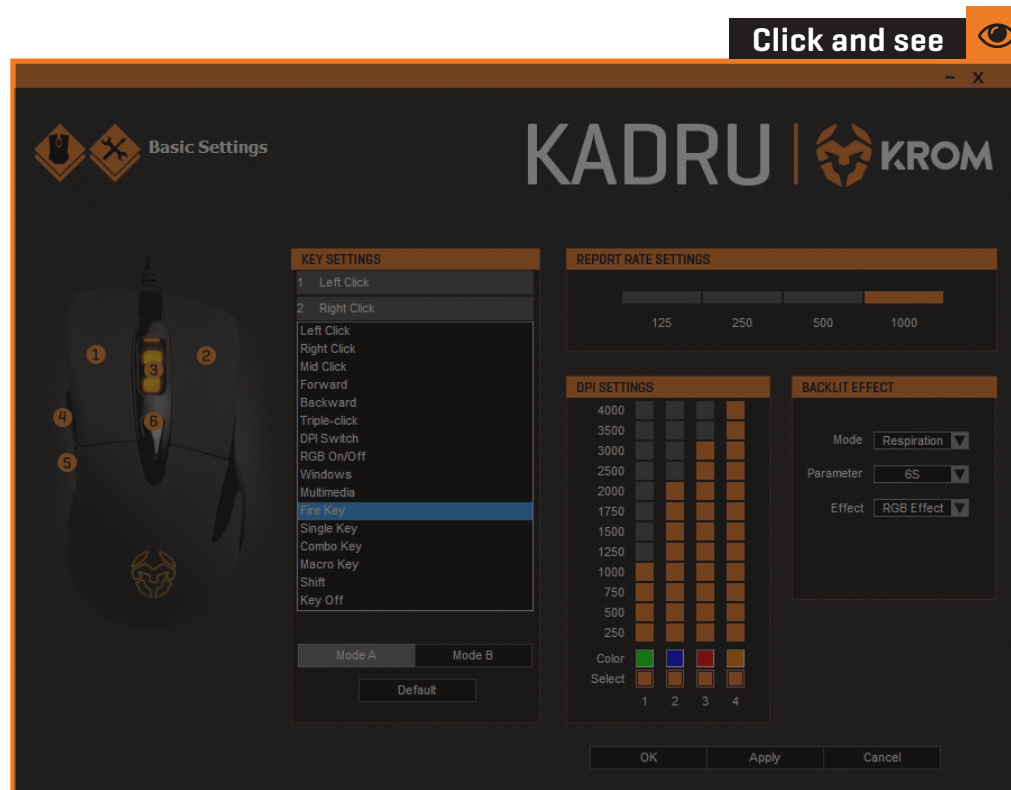
INDEX

Functions

• Multimedia function

Keys combinations

• Fire key creation



Kadru Software Manual

INDEX

Keys combinations

• Fire key creation

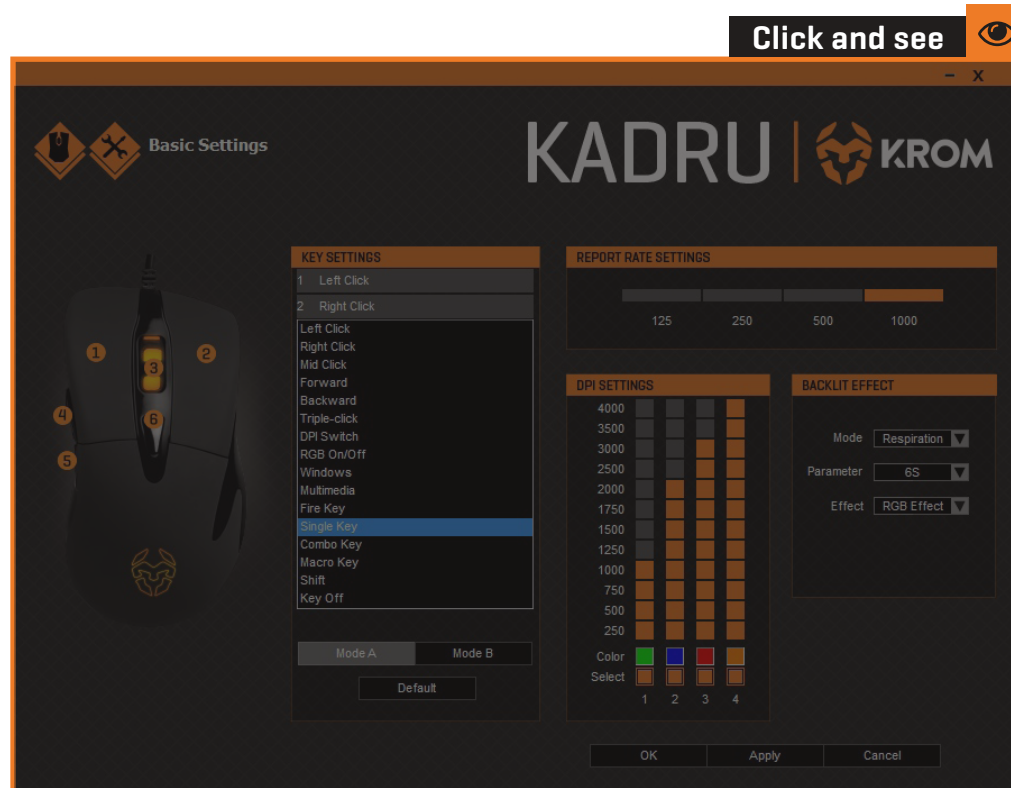
Create and assign a fire key function to any Kadru button by choosing a key in the Key Settings' dropdown menu. Click on the Fire Key option to open a dialog box to set:

- 1. The firing key** [you can choose from A to J].
- 2. The firing speed.**
- 3. The amount of times per click** the system repeats the action.

Once the action is set, click Ok to save it.

Keys combinations

- Single key creation



Kadru Software Manual

INDEX

Keys combinations

- Single key creation

Assign a single key function to any Kadru button by choosing a key in the dropdown menu into the Key Settings menu.

Click on the Single Key option to open a dialog box where you can choose which key should run the selected button. Once chosen, click Ok to save the change.

Keys combinations

- Combo keys creation



Kadru Software Manual

INDEX

Keys combinations

- Combo keys creation

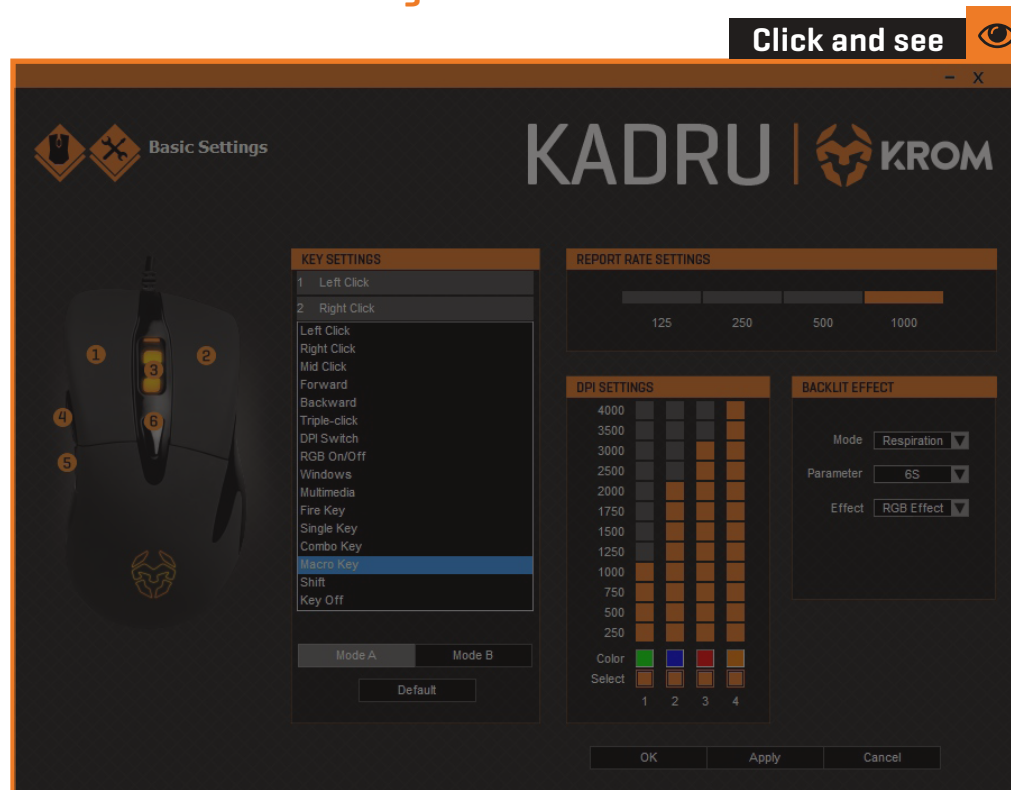
Create and assign a combo key function to any Kadru button by choosing a key in the Key Settings' dropdown menu. Click on the Combo Key option to open a dialog box to set:

1. Control / Shift / Alt / Win key [you can choose one from left to right].
2. The keys which complete the combo.

Once the action is set, click Ok to save it.

Keys combinations

- Macro keys combinations button assignment



Kadru Software Manual

INDEX

Keys combinations

- Macro keys combination button assignment

Assign a macro combination to any Kadru button by choosing a key in the dropdown menu into the Key Settings menu. Click on the Macro Key option to open a dialog box to choose:

1. Which Macro combination should be assigned to the selected button.

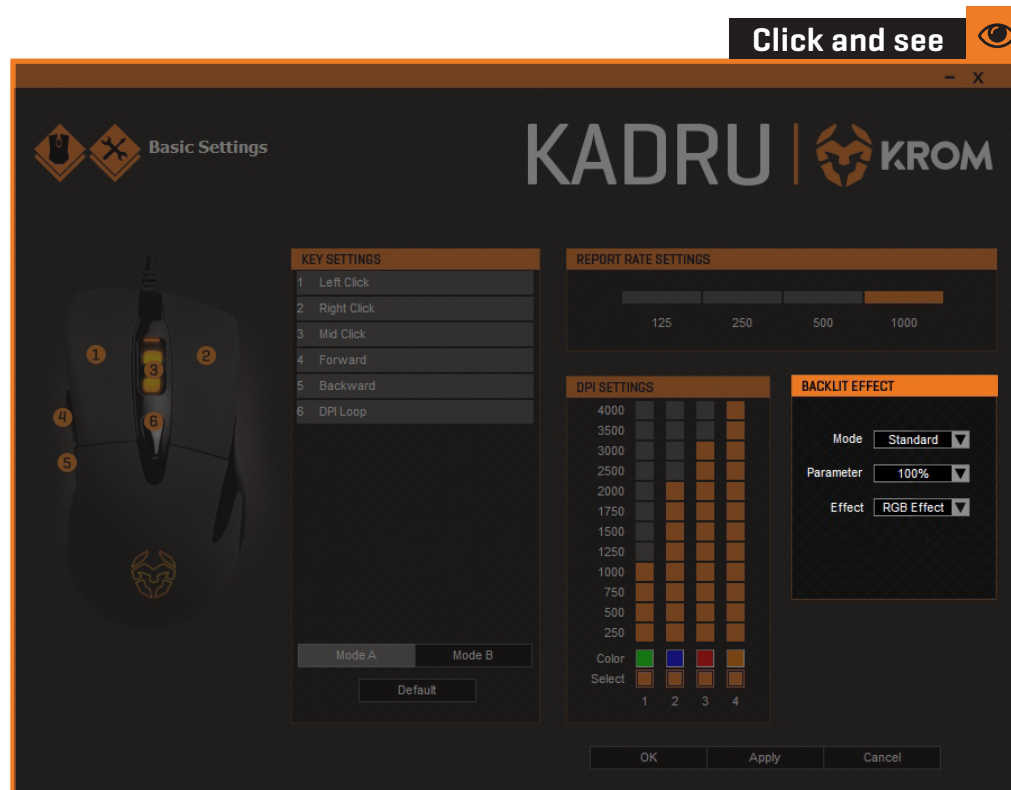
[see page 9 for **Macro's creation process**]

2. Which action should be run when pressing the selected button.

Once the action is set, click Ok to save it.

Backlit effect modes

- Standard mode



Kadru Software Manual

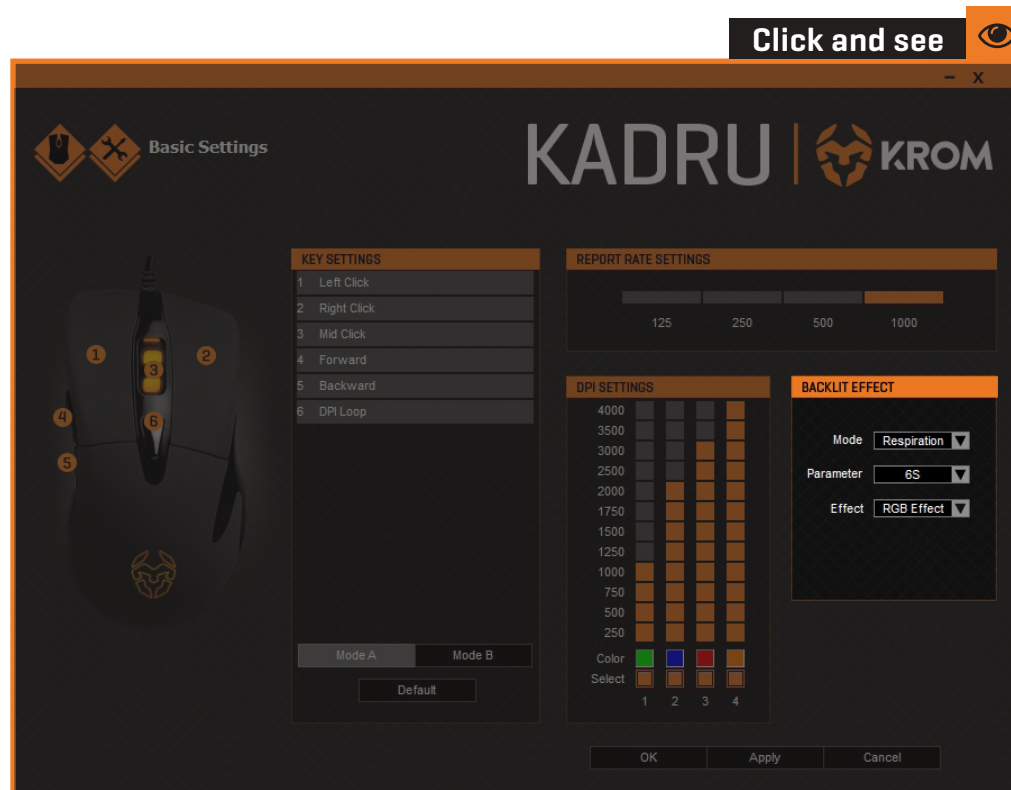
INDEX

Backlit effect modes

- Standard mode

Backlit effect modes

- Breathing mode



Kadru Software Manual

INDEX

Backlit effect modes

- Breathing mode

Breathing backlit mode sets a breathing RGB illumination effect. You can regulate effect's interval by choosing among the time frames given in the Parameter box list.

Backlit effect modes

- Neon mode



INDEX

Backlit effect modes

- Neon mode

Neon backlit mode sets a bright neon RGB illumination effect. You can regulate effect's transition interval by choosing a time frame among the given ones in the Parameter box list.

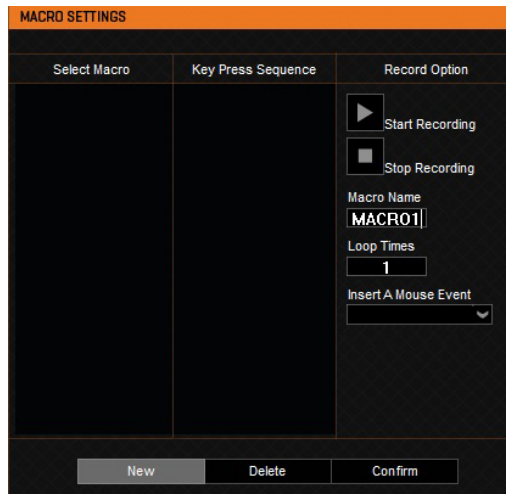
You can also choose whether you want to add to the effect's transition a RGB flash effect or a fixed RGB effect.

Advanced settings

• Macros creation

INDEX

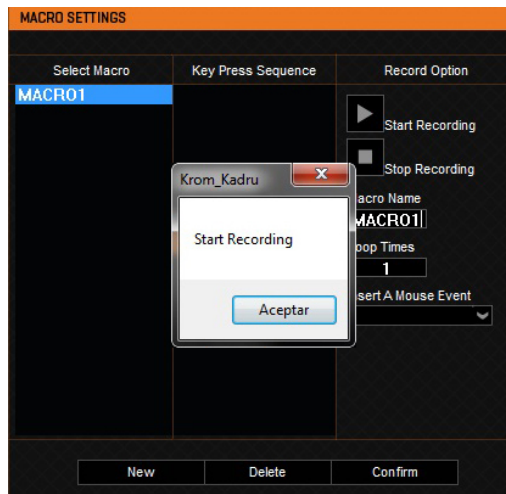
Advanced settings • Macros creation



1. SET MACRO NAME & LOOP TIMES

To create a macro key combination, start by setting its name and the amount of times it should repeat the assigned action.

Click the **New** button to save this parameters before start recording your new macro.



2. START RECORDING

Press the **Start Recording** button to begin registering the key sequence that will comprise the macro keys combination.

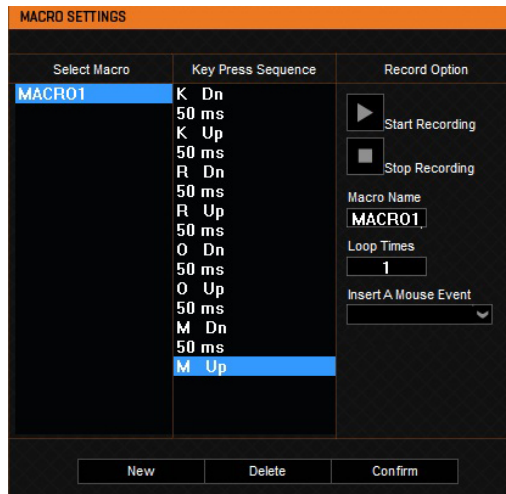
continues in next page >>

Advanced settings

• Macros creation

INDEX

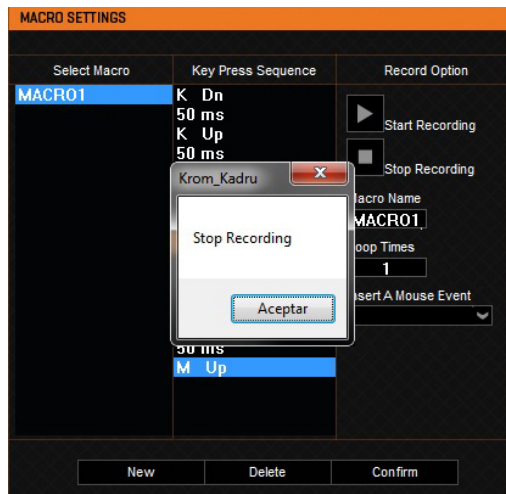
Advanced settings • Macros creation



3. RUN THE KEYSTROKES

Start typing the macro key combination in your keyboard.

Kadru’s software interface will show you every key stroked while the recording is running.



4. STOP RECORDING

Press the **Stop Recording** button to finish registering the macro keys combination.

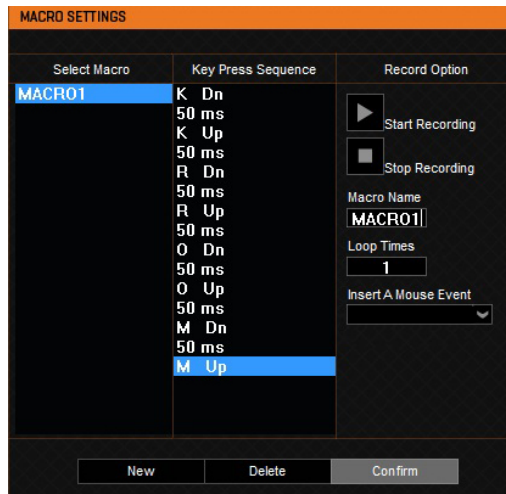
continues in next page >>

Advanced settings

• Macros creation

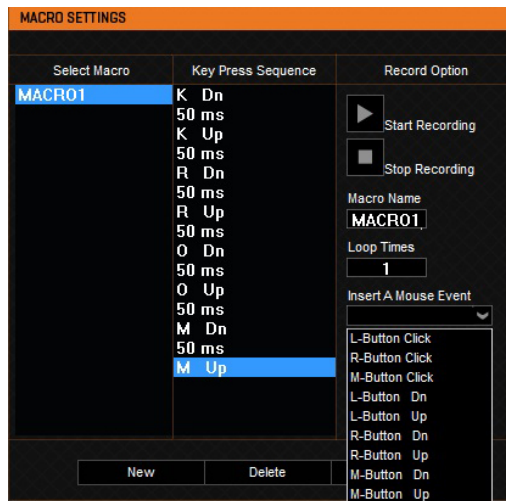
INDEX

- Advanced settings
- Macros creation



5. SAVE RECORDED MACRO COMBINATION

Press the **Confirm** button to save the macro keys combination just created: you will lose all the recorded data unless you press this button.



6. ASSIGN MOUSE'S BUTTONS EVENTS TO THE NEW MACRO

You can add more events from the left, right and middle button in your new macro by using this drop-down menu.

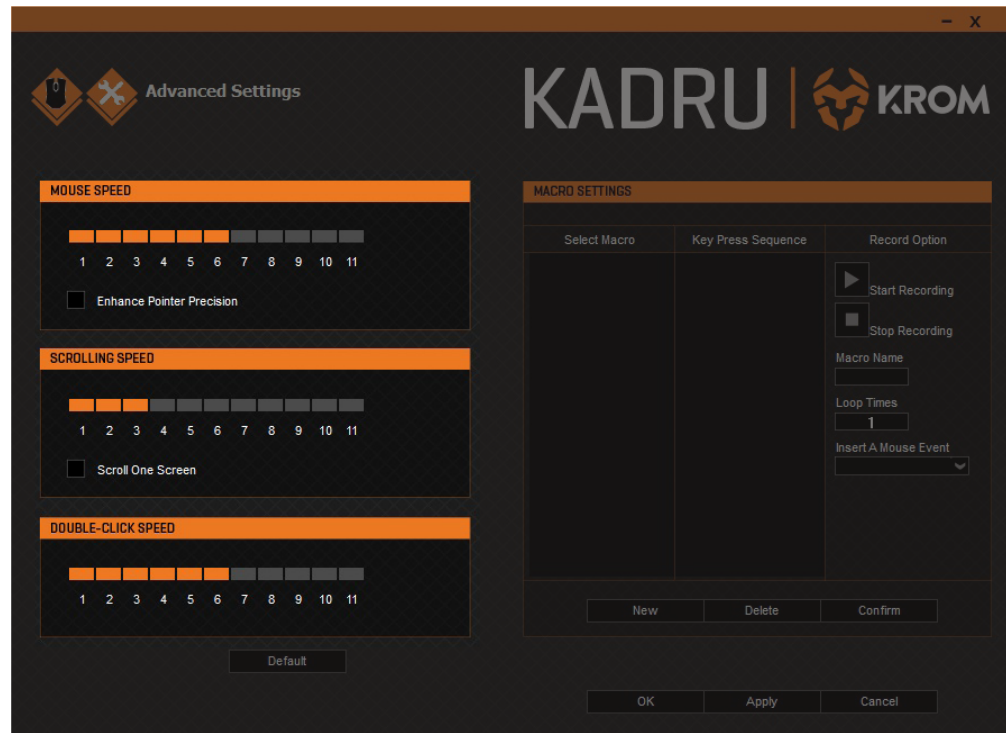
Advanced settings

- Speed settings

INDEX

- Advanced settings

 - Speed settings



Kadru’s software allows you to change its varied range of speed levels:

1. **Mouse Speed:** change Kadru’s cursor speed and precision.
2. **Scrolling speed:** change Kadru’s scroll button speed.
3. **Double-click speed:** change Kadru’s main buttons double click speed.



KROM

EN

All safety warnings give specific details of the potential danger/warning present and indicate how to reduce risk of injury, damage resulting from improper use of the product.

Carefully observe the following instructions:

- Installation and maintenance must be carried out by a qualified technician, in compliance with the manufacturer's instructions and local safety regulations.
- Do not repair or replace any part of the appliance unless specifically stated in the user manual.
- The appliance must be disconnected from the power supply before carrying out any installation work
- Do not touch the appliance with any wet part of the body and do not operate it when barefoot
- The product is not intended for use by persons (including children) with any physical, sensory or mental impairment, or without experience and knowledge of the appliance, unless supervised or previously instructed in its use by those responsible for their safety.
- Children must be supervised to ensure they do not play with the product.
- This product is not suitable for outdoor use.

GENERAL RECOMMENDATIONS:

Before use:

Remove cardboard protection pieces, protective film and adhesive labels from accessories. Children must be supervised during the process to avoid any risk of suffocation.

Check the appliance for any transport damage.

During use:

To avoid any damage do not place any weights on the appliance.

Do not expose the appliance to atmospheric agents.

CLEANING:**IMPORTANT:**

Do not use corrosive or abrasive detergents. If any of these products accidentally comes into contact with the appliance, clean immediately with a damp cloth. Do not clean or open the product while when any power cables are attached.

Clean the surfaces with a damp cloth. Finish off with a dry cloth.

IMPORTANT:

Do not use abrasive sponges or metallic scrapers or scourers. Over time, these can ruin the surface.

CE STATEMENT OF COMPLIANCE WITH EUROPEAN UNION DIRECTIVES

KROM declares that this product is in compliance with the essential requirements and other relevant provisions from the following Directive: 2014/30/EU, as applicable. The technical documentation required by the Conformity Evaluation process is in KROM's possession and can be requested through info@kromgaming.com



DISPOSAL OF BATTERIES AND ELECTRICAL OR ELECTRONIC EQUIPMENT WASTE

The existence of this symbol on the product, batteries or respective packaging, signifies that this product and the contained batteries can not be disposed as domestic waste.

It is the user's responsibility to deliver this product at a batteries, electrical or electronic recycling pick-up point.

The pick-up and separate recycling contributes for the preservation of natural resources and suppresses potential negative consequences for the human health and the environment resultant of inadequate disposal of dangerous substances contained in batteries and electrical or electronic equipment.

For additional informations regarding batteries, electrical or electronic recycling pick-up points, please contact your local municipal services.

WARNINGS FOR WIRELESS PRODUCTS USAGE

Radio waves from this product may negatively affect the operation of medical electronic equipment, causing them to malfunction. When using this product inside medical facilities or near medical equipment, follow directions from the authorized personnel representing the medical facilities, and follow all posted warnings and directions on the medical equipment.

Radio waves from this product may negatively affect the operation of automatically controlled devices such as automatic doors or fire alarms, and could lead to accidents due to malfunction. When using this product near automatically controlled devices, follow all posted warnings and directions on these devices.

This equipment generates, uses and can radiate radio frequency energy and, if not installed and used in accordance with the instructions, may cause harmful interference to radio communications.

However, there is no guarantee that interference will not occur in a particular installation. If this equipment does cause harmful interference to radio or television reception, which can be determined by turning the equipment off and on, the user is encouraged to try to correct the interference by one or more of the following measures:

- Reorient and relocate the receiving antenna
- Increase the separation between the equipment and receiver
- Connect the equipment to an electrical outlet on a different circuit to that which the receiver is connected.

This product, like other radio devices, emits radio frequency electromagnetic energy and operates within the guidelines found in radio frequency safety standards and recommendations.

WARRANTY:

Who does the warranty protect:

This warranty is valid for the original purchaser only.

What does the warranty protect:

Warranty: 3 years from the date of purchase (from January 2022 and depending on the laws of each country)

What does not the warranty cover:

1. Any product, on which the serial number has been defaced, modified or removed.
2. Accident, misuse, neglect, fire, water, lightning, or other acts of nature, unauthorized product modification, or failure to follow instructions supplied with the product.
3. Repair or attempted repair by anyone not authorized by KROM.
4. Damage to or loss of any programs, data or removable storage media.
5. Software or data loss occurring during repair or replacement.
6. Any damage of the product due to shipment.
7. Removal or installation of the product.
8. External causes, such as electric power fluctuations or failure.
9. Use of supplies or parts not meeting KROM's specifications.
10. Normal wear and tear.
11. Any other cause which does not relate to a product defect.

If you have any questions regarding technical problems, please contact us via our website:
www.kromgaming.com

KROM reserves the right for any modifications in text and/or images.

Krom Gaming registered trademark of Atlas Informática S.L. - B92492032 - Calle Punta Alta, 33,
29006 - Málaga - Spain. info@kromgaming.com

ES

Todas las advertencias de seguridad brindan detalles específicos del peligro potencial existente e indican cómo reducir el riesgo de lesiones, daños resultantes del uso inadecuado del producto.

Observe atentamente las siguientes instrucciones:

- La instalación y el mantenimiento deben ser realizados por un técnico cualificado, de acuerdo con las instrucciones del fabricante y las normas de seguridad locales.
- No repare ni reemplace ninguna pieza del aparato a menos que se indique específicamente en el manual del usuario.
- El aparato debe estar desconectado de la fuente de alimentación antes de realizar cualquier trabajo de instalación.
- No toque el producto con ninguna parte del cuerpo mojada y no lo utilice descalzo.
- El producto no está diseñado para ser utilizado por personas (incluidos niños) con algún impedimento físico, sensorial o mental, o sin experiencia y conocimiento del aparato, a menos que haya sido supervisado o instruido previamente en su uso por los responsables de su seguridad.
- Los niños deben ser supervisados para asegurarse de que no jueguen con el producto.
- Este producto no es apto para uso en exteriores.

RECOMENDACIONES GENERALES:

Antes de usar:

Retire las piezas de protección de cartón, la película protectora y las etiquetas adhesivas de los accesorios. Los niños deben ser supervisados durante el proceso para evitar cualquier riesgo de asfixia.

Compruebe si el aparato presenta daños durante el transporte.

Durante el uso:

Para evitar cualquier daño, no coloque ningún peso sobre el aparato.

No exponga el aparato a agentes atmosféricos.

LIMPIEZA:**IMPORTANTE:**

No utilice detergentes corrosivos o abrasivos.

Si alguno de estos productos entra en contacto accidentalmente con el aparato, límpielo inmediatamente con un paño húmedo. No limpie ni abra el producto mientras esté conectado algún cable de alimentación.

Limpiar las superficies con un paño húmedo. Rematar con un paño seco.

IMPORTANTE:

No utilice esponjas abrasivas ni raspadores o estropajos metálicos. Con el tiempo, estos pueden estropear la superficie.

CE DECLARACIÓN DE CUMPLIMIENTO DE LAS DIRECTIVAS DE LA UNIÓN EUROPEA

KROM declara que este producto cumple con los requisitos esenciales y otras disposiciones relevantes de la siguiente Directiva: 2014/30/EU, según corresponda. La documentación técnica requerida por el proceso de Evaluación de la Conformidad está en poder de KROM y puede ser solicitada a través de info@kromgaming.com



ELIMINACIÓN DE BATERÍAS Y RESIDUOS DE APARATOS ELÉCTRICOS O ELECTRÓNICOS

La existencia de este símbolo en el producto, las baterías o el embalaje respectivo, significa que este producto y las baterías contenidas no pueden eliminarse como residuos domésticos.

Es responsabilidad del usuario entregar este producto en un punto de recogida de reciclaje de baterías, aparatos eléctricos o electrónicos.

La recogida y reciclaje separado contribuye para la preservación de los recursos naturales y suprime las posibles consecuencias negativas para la salud humana y el medio ambiente resultantes de la eliminación inadecuada de sustancias peligrosas contenidas en baterías y equipos eléctricos o electrónicos.

Para obtener información adicional sobre los puntos de recogida de reciclaje de baterías, productos eléctricos o electrónicos, comuníquese con los servicios municipales de su localidad.

ADVERTENCIAS PARA EL USO DE PRODUCTOS INALÁMBRICOS

Las ondas de radio de este producto pueden afectar negativamente el funcionamiento de los equipos médicos electrónicos y provocar su mal funcionamiento. Cuando utilice este producto dentro de instalaciones médicas o cerca de equipos médicos, siga las instrucciones del personal autorizado que representa a las instalaciones médicas y siga todas las advertencias e instrucciones publicadas en el equipo médico.

Las ondas de radio de este producto pueden afectar negativamente el funcionamiento de los dispositivos controlados automáticamente, como puertas automáticas o alarmas contra incendios, y podrían provocar accidentes debido a un mal funcionamiento. Cuando utilice este producto cerca de dispositivos controlados automáticamente, siga todas las advertencias e instrucciones publicadas en estos dispositivos.

Este equipo genera, utiliza y puede irradiar energía de radiofrecuencia y, si no se instala y utiliza de acuerdo con las instrucciones, puede causar interferencias perjudiciales en las comunicaciones por radio.

Sin embargo, no hay garantía de que no se produzcan interferencias en una instalación en particular. Si este equipo causa interferencia dañina a la recepción de radio o televisión, lo que se puede determinar apagando y encendiendo el equipo, se recomienda al usuario que intente corregir la interferencia mediante una o más de las siguientes medidas:

- Reorientar y reubicar la antena receptora
- Aumente la separación entre el equipo y el receptor
- Conectar el equipo a una toma de corriente en un circuito diferente al que tiene el receptor está conectado.

Este producto, al igual que otros dispositivos de radio, emite energía electromagnética de radiofrecuencia y funciona dentro de las pautas que se encuentran en las normas y recomendaciones de seguridad de radiofrecuencia.

GARANTÍA:

A quién protege la garantía:

Esta garantía es válida únicamente para el comprador original.

Qué protege la garantía:

Garantía: 3 años a partir de la fecha de compra (desde enero de 2022 y dependiendo de las leyes de cada país)

Qué no cubre la garantía:

1. Cualquier producto en el que el número de serie haya sido desfigurado, modificado o eliminado.
2. Accidente, uso indebido, negligencia, incendio, agua, rayos u otros actos de la naturaleza, modificación no autorizada del producto o incumplimiento de las instrucciones proporcionadas con el producto.
3. Reparación o intento de reparación por parte de alguien no autorizado por KROM.
4. Daños o pérdida de cualquier programa, datos o medios de almacenamiento extraíbles.
5. Pérdida de software o datos que ocurra durante la reparación o el reemplazo.
6. Cualquier daño del producto debido al envío.
7. Desmontaje o instalación del producto.
8. Causas externas, como fluctuaciones o fallas en la energía eléctrica.
9. Uso de suministros o partes que no cumplan con las especificaciones de KROM.
10. Desgaste normal.
11. Cualquier otra causa que no se relacione con un defecto del producto.

Si tiene alguna pregunta sobre problemas técnicos, contáctenos a través de nuestro sitio web: www.kromgaming.com.

KROM se reserva el derecho de realizar modificaciones en el texto y/o en las imágenes.

Krom Gaming marca registrada por Atlas Informática S.L. - B92492032 - Calle Punta Alta, 33, 29006 - Málaga - España. info@kromgaming.com