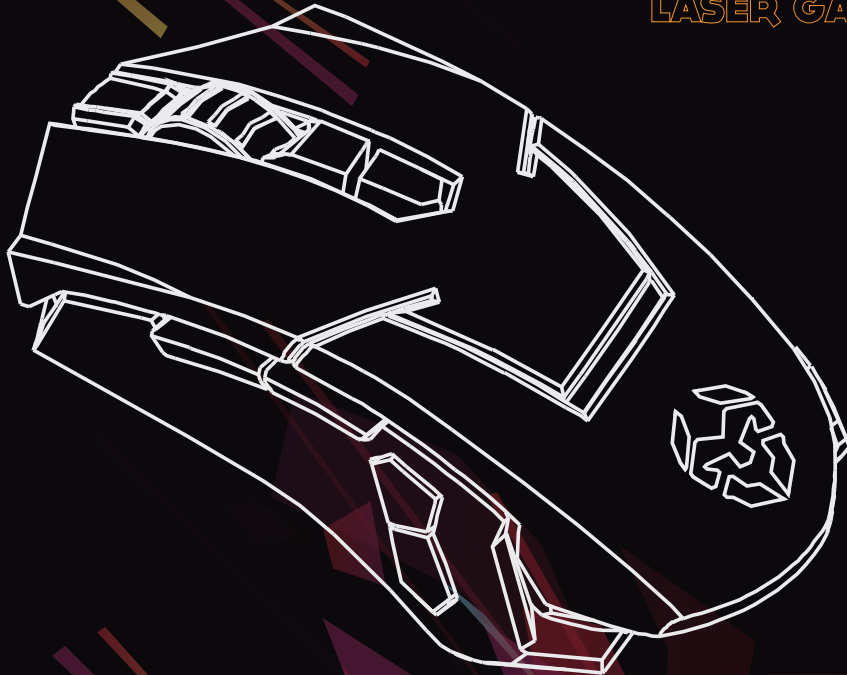


KROM

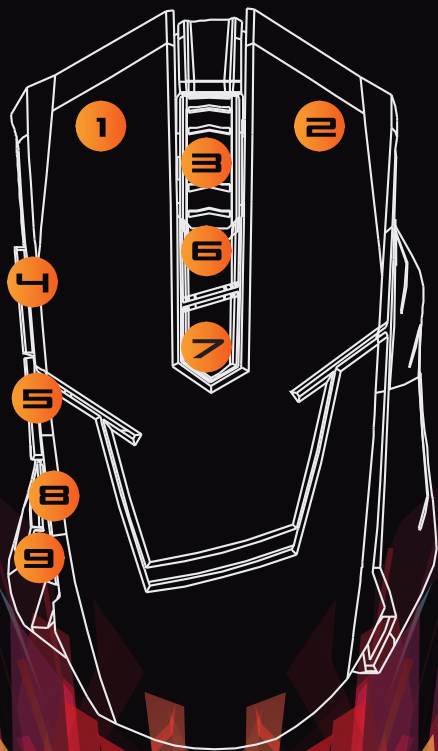
KORPS

LASER GAMING MOUSE - 8200 DPI



USER MANUAL

DEFAULT BUTTON ASSIGNMENT



- 1). Left button
- 2). Right button
- 3). Scroll wheel
- 4). Forward button
- 5). Backward button
- 6). DPI increase button
- 7). DPI reduce button
- 8). Double shot fire button
- 9). Button profile switching

DRIVER USER MANUAL

SYSTEM REQUIREMENTS

1. Operation system:

Windows XP / Windows Vista / Windows 7 / Windows 8

2. Free USB 1.1 / 2.0 / 3.0 port

3. Driver installation

4. 50MB free hard disk space

INSTALLATION INSTRUCTIONS

1. Plug USB connector of KROM KORPS to a USB port of your PC.

2. Double click "setup.exe" to start the installation program (download from www.kromgaming.com).

3. Select the folder to save the driver and click "next" to continue.

4. Installation run automatically: click "finish" to complete the installation.

CONFIGURATION OF MOUSE

1. BUTTON CONTROL

Programmable buttons

- 1) In the "right panel", click the button that need to be changed.
- 2) Select from the list the new action.



- 3) Then click "Apply" to complete the change.

1.1. Button assignment

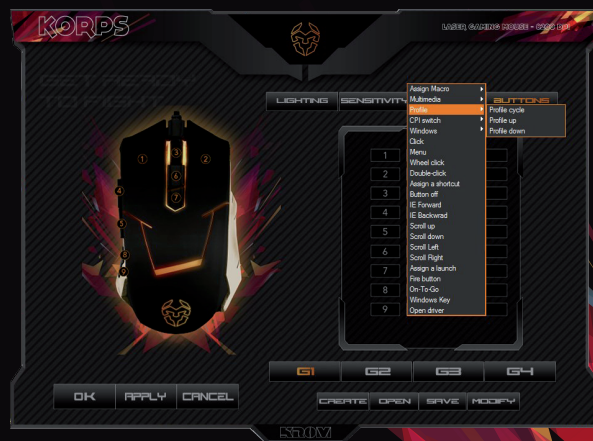
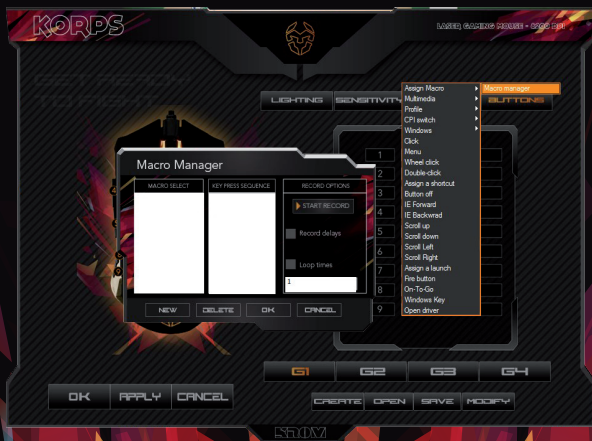
1.1.1 Assign a macro

- 1) Select a button and click "Assign macro" from the menu, and select "Macro manager".
- 2) In the pop-up window, press NEW and give a personalized name.
- 3) Click "Start record" and type your desired keys and click "Stop record" when finished. Click "OK" to save the changes.
- 4) Click "Assign macro" and select the new macro from the list.
- 5) Then, click "APPLY" to confirm the settings.

1.1.2 Profile

- 1) Select a button and click "Profile" from the menu.
- 2) Select the desired function in the sub-menu and click "APPLY" to confirm the settings.

Profile Cycle: Cycle Switching / **Profile Up:** Profile + / **Profile Down:** Profile -



1.1.3 CPI Switch

- 1) Select a button and click "CPI Switch" from the menu.
- 2) Select the desired function in the sub-menu and click "Apply" to confirm the settings.

CPI Cycle: Cycle Switching / CPI Up: DPI level + / CPI Down: DPI level -

1.1.4 Windows

- 1) Select a button and click "Windows" from the menu.
- 2) Select the desired function in the sub-menu and click "Apply" to confirm the settings.



1.1.5 Mouse functions

- 1) Select a button and click the desired mouse function in the menu.
- 2) Then, click "Apply" to confirm the settings.

1.1.6 Assign a launch

Single mouse click to launch a PC program that you use frequently.

- 1) Select a button and click "Assign a launch" from the menu.
- 2) In the pop-up window, select the desired program from the folder and click "OK" to continue.
- 3) Click "Apply" to complete the settings.

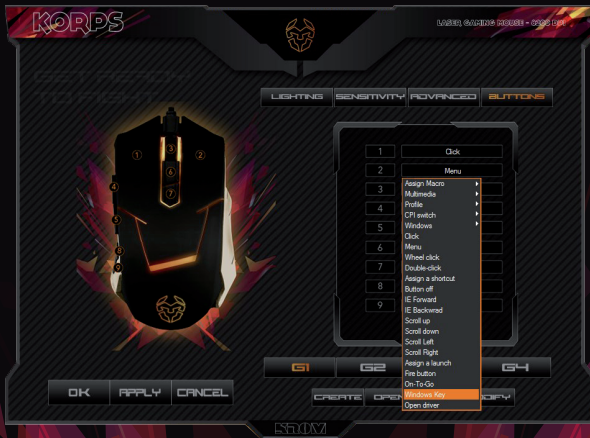


1.1.7 Windows Key

- 1) Select a button and click **"Windows Key"** from the menu.
- 1) The same function as the windows key on the keyboard.
- 2) Then, click **"APPLY"** to confirm the settings.

1.1.7 Open driver

- 1) Select a button and click **"Open driver"** from the menu.
- 2) This function allow to open a software / programe
- 2) Then, click **"APPLY"** to confirm the settings.



1.1.8 Multimedia

- 1) Select the option "Multimedia" from the drop-down menu.
- 2) Select one of the list: "Open player", "Pre track", "Next track", "Play/Pause", "Stop", "Mute", "Volume up", "Volume down".
- 3) Then click "Apply" to complete the change.

1.1.9 Assign a shortcut

- 1) Select an option "Assign a shortcut" from the drop down menu.
- 2) Then press one of four options for combination ("None", "CTRL", "ALT", "SHIFT") and the key you want.
- 3) Then click "Apply" to complete the change.



2. ADVANCED

Polling rate / Response time

- 1) You can choose between 125, 250, 500 and 1000 Hz. The response time can be changed in section "On-to-go speed".
- 2) Then click "Apply" to complete the change.

Double click / Scroll wheel

- 1) You can modify the speed of double click and pointer, and the speed of scroll wheel in horizontal and vertical.
- 2) Then click "Apply" to complete the change.



3. SENSITIVITY

Sensitivity control

- 1) Select the sensitivity of horizontal and vertical movements that you prefer (slower or faster).
- 2) Then click "Apply" to complete the change.

DPI level

- 1) You can choose the level of DPI and the color to show.
- 2) Then click "Apply" to complete the change.

Note: You can turn on or turn off the LED on LIGHTNING menu



4. GAMING PROFILE SETTINGS

The mouse has four different profiles with own settings.

Each configuration profile is for a custom fit mouse. Therefore, you can configure each of the four profiles differently.

You can create a variety of configurations and save them for future use.

This will avoid duplication of settings. If you change to a different computer, you can simply import you saved configurations and you will not have set your personalized settings again.

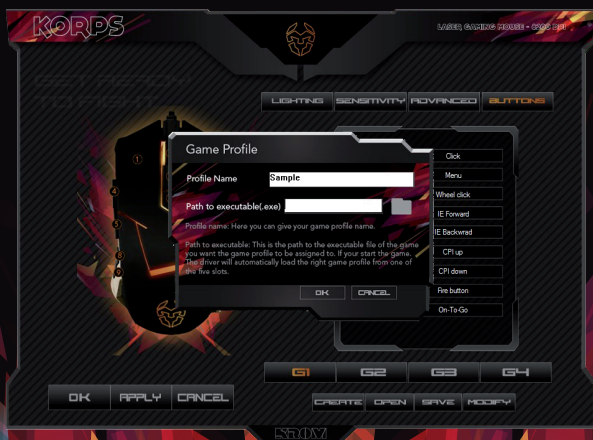
SPECIFICATIONS

Sensor Laser AVAGO 9800
 Resolution 600 / 1200 / 2000 / 4000 / 6000 / 8200 dpi
 Buttons 9

Polling rate125 - 250 - 500 - 1000Hz
 Acceleration 20 G
 Response time 2 - 65 - 125 - 190 - 255 ms
 Speed 60 inches/sec
 Internal memory..... 128kb
 Macros 255
 Profiles 4

Dimensions 74 x 42 x 128 mm
 Cable Length 170±10 cm
 Plug USB
 Net Weight 140 gr

Compatibility Windows XP / Vista / 7 / 8



WARRANTY

Who the warranty protects:

This warranty is valid to the original purchaser only.

What the warranty protects:

For your warranty claims, please contact Krom gaming overseas distribution partners in your country. Find the distribution partner list at www.kromgaming.com

- Warranty: 2 years from purchasing date. (Depending on the laws of each country)
- URL: www.kromgaming.com
- E-mail: support@kromgaming.com

What the warranty does not cover:

1. Any product, on which the serial number has been defaced, modified or removed.
2. Accident, misuse, neglect, fire, water, lightning, or other acts of nature, unauthorized product modification, or failure to follow instructions supplied with the product.
3. Repair or attempted repair by anyone not authorized by Krom.
4. Damage to or loss of any programs, data or removable storage media.
5. Software or data loss occurring during repair or replacement.
6. Any damage of the product due to shipment.
7. Removal or installation of the product.
8. External causes, such as electric power fluctuations or failure.
9. Use of supplies or parts not meeting kromgaming's specifications.
10. Normal wear and tear.
11. Any other cause which does not relate to a product defect.



KROM

If you have any questions regarding technical problems please contact us via our website:

www.kromgaming.com

KROM reserves the right for any modifications in text and/or images.