



POWERED BY
NOX

www.nox-xtreme.com

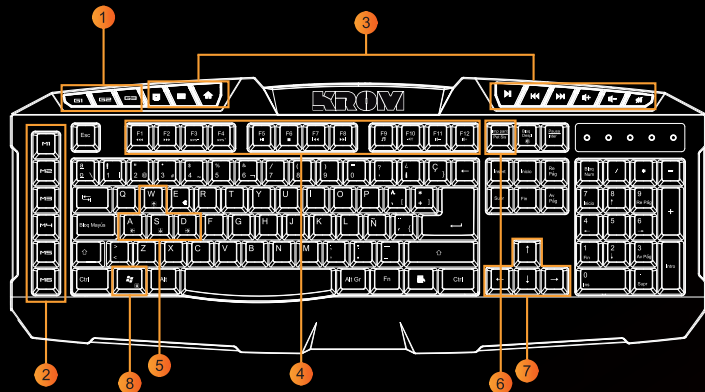
KROM
KONKER
PRO GAMING KEYBOARD



USER MANUAL



KEYBOARD KONKER LAYOUT



1). Gaming profiles

2). Macro keys

3). Multimedia keys

4). Function Keys

5). Game Keys

6). Exit Gaming Mode shortcut

7). Arrows keys

8). WASD/ Arrows Keys lock

KEY FUNCTIONS

• Gaming Profiles:

Quick access keys to different game profiles



G1: Profile 1 - G1 lighted.

G2: Profile 2 - G2 lighted.

G3: Profile 3 - G1/G2 lighted.

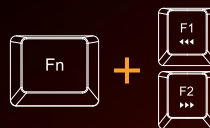
• Macro Keys:



Quick access to programmable macro keys.

• Adjust Response time:

1ms - 2ms - 4ms - 8ms - 12ms - 14ms - 16ms

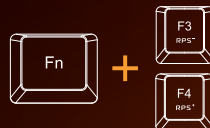


To reduce Response time

To increase Response time

• Adjust Polling rate:

125 Hz - 250 Hz - 500 Hz - 1000 Hz



To reduce Report rate

To increase Report rate



KEYBOARD KONKER LAYOUT

- Function shortcut keys on keyboard from **F5 - F12**

Press **Fn** key for media playback functions



Play or Pause



Start Media Player



Stop



Mute



Previous Track



Volume -



Next Track



Volume +

- Press **FN + ScrLLock** on keyboard to adjust led brightness:

Default Mode: Pulsating Lighting Effects



- | | |
|---------------------|--------------------|
| 1: Breathing Effect | 7: 50% Brightness |
| 2: 100% Brightness | 8: 40% Brightness |
| 3: 90% Brightness | 9: 30% Brightness |
| 4: 80% Brightness | 10: 20% Brightness |
| 5: 70% Brightness | 11: 10% Brightness |
| 6: 60% Brightness | 12: Off |

- Gaming Mode:

- Press any **Profile Key** on the keyboard to enter Gaming Modes (G1, G2 or G3).

- Press **Fn + PrntScr** on the keyboard to exit Gaming Mode.

In gaming mode, Konker will work under following conditions:

- Left **Windows Key** can be disabled by Software.

- **Arrows Keys Lock (WASD)** pressing **Fn + WIN** Key



Exit Gaming Mode



WASD Arrows Function



DRIVER USER MANUAL

CONFIGURATION OF KEYBOARD

SYSTEM REQUIREMENTS

1. Operation System: Windows XP / Windows Vista / Windows 7 / Windows 8.
2. Free USB 2.0 port.
3. CD-ROM drive.
4. 50 MB free hard disk space.

INSTALLATION INSTRUCTIONS

OS: Windows XP / Windows Vista / Windows 7 / Windows 8.

1. Plug USB connector of KONKER to a USB port of your PC.
2. Insert the enclosed CD driver in your PC. (or download the driver from NOX KROM OFFICIAL WEBSITE).
3. Double click on "Setup.exe" to start the installation program. Click "Next" to continue.
4. Select a folder where to save the driver and click "Next" to continue.
5. Installation run automatically, click "Finish" to complete the installation.

1. MAIN CONTROL

Exchange Key

- 1) In the "Main Control" section, click the key (except the blocked keys) that need to be changed.
- 2) In the pop-up window, enter the new keys and click "Ok".



- 3) Then click "Apply" to complete the change. Ex. Key "J" is now marked in RED and will execute "K".

CONFIGURATION OF KEYBOARD

2. MACRO SETTINGS

Macro is a series of keys you can programme, which can be assigned to the keyboard once recorded. In other words, it is combination of press and release, in which every action is recorded (press, delay and release time). Delay means the duration between “press and release” of keys, which all can be automatically recorded and output once the macro is settled.

2.1 Create and assign a Macro

Programmable Macro Keys: M1, M2, M3, M4, M5, M6

- 1) Select a macro key and click “Macro Manager”.
- 2) In the pop-up window, click “New” and write a personalized name.
- 3) Select the options of “Record Delays” and set the “Loop Times” from the right column if needed.
- 4) Click “Start Record”, type a combination of keys and click “Stop Record” when finished. Click “Ok” to continue.
- 5) Assign one of the “Macro” created to a “Macro Key” and click “Apply” to complete the setting.





CONFIGURATION OF KEYBOARD

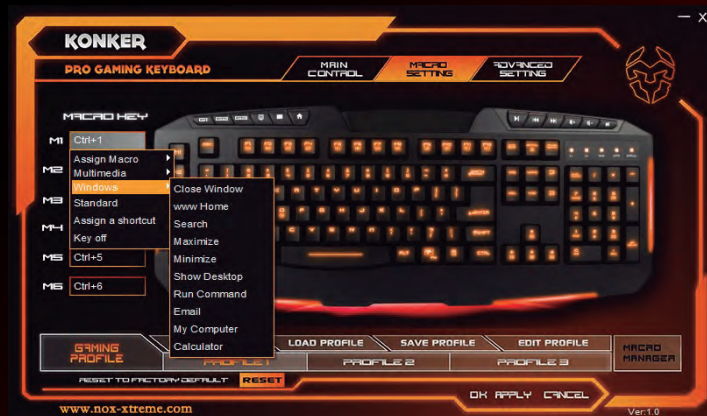
2.2 Multimedia Hotkey

- 1) Select a macro key and click "Multimedia".
- 2) Select a function in the sub-menu and click "Apply" to confirm the setting.



2.3 Windows management

- 1) Select a macro key and click "Windows".
- 2) Select a function in the submenu and click "Apply" to confirm the setting.

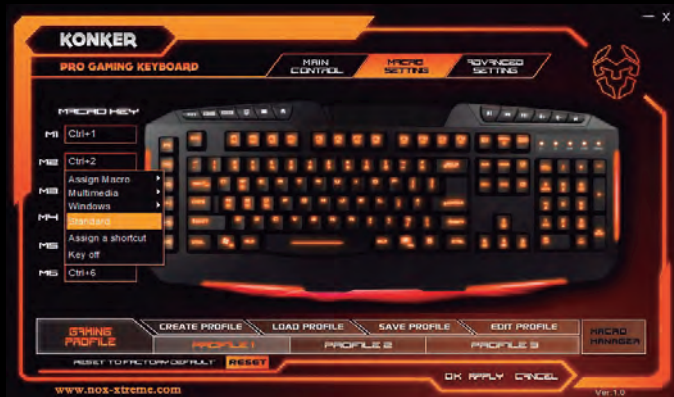




CONFIGURATION OF KEYBOARD

2.4 Standard: Reset to default

- 1) Select a macro key and click "Standard", then click "Apply" to confirm the setting.



2.5 Key off: Disable the key function

- 1) Select a macro key and click "Key off", then click "Apply" to confirm the setting.

2.6 Assign a Shortcut

Single keystroke to activate a combination of keys often used.

- 1) Select a macro key and click "Assign a Shortcut".



- 2) Select and enter a combination of keys from the pop-up window and click "Ok" to continue.
- 3) Click "Apply" to complete the setting. Ex. now the "Ctrl" + "C" will be executed.





CONFIGURATION OF KEYBOARD

3. ADVANCED SETTINGS

In the "Advanced Setting", you can:

- 1) Set the Polling Rate.
- 2) Disable Windows key.
- 3) Adjust key Response Time.
- 4) Change LED Brightness.



4. GAMING PROFILE SETTINGS

Each Configuration Profile corresponds to one personalized keyboard setting. Therefore, gamers can get powerful support from such feature by creating a specific configuration profile for different games. The defined configuration profile can be saved. The driver equips 3 profile configurations: G1, G2 and G3. The default path of the configurations saved is in the "Config" folder, under the "Driver Installation Directory", in which you can find 3 files that correspond with the 3 profiles on the main skin.



Under **Gaming Profile** setting there are options to **Create Profile**, **Load Profile**, **Save Profile**, and **Edit Profile** to set personalized configuration.

You can create a variety of configurations and save them for future use. This will avoid duplication work of settings. Even if you change to a different computer, you can still import the previous configuration recorded and play with it without setting again.



CONFIGURATION OF KEYBOARD

4.1 Create Profile

- 1) Click "Create Profile" for creating the personalized PROFILE NAME and PATH to execute game.



- 1.1) Create a name in the column "PROFILE NAME".
- 1.2) Click the folder symbol and select your path to execute the game from the pop-up window.

- 2) Click "Ok" to confirm the change.
- 3) Click "Apply" to apply the change.





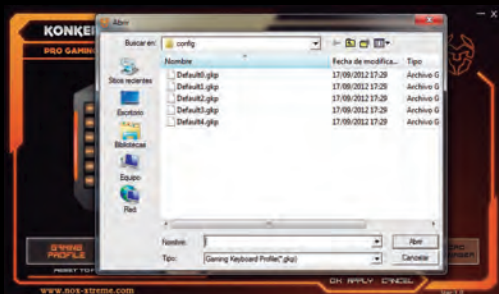
CONFIGURATION OF KEYBOARD

4.2 Load Profile

- 1) Click "Load Profile" for executing previous settings.



- 2) Select the profile to be imported and click "Open".
- 3) Click "Apply" to apply the change.

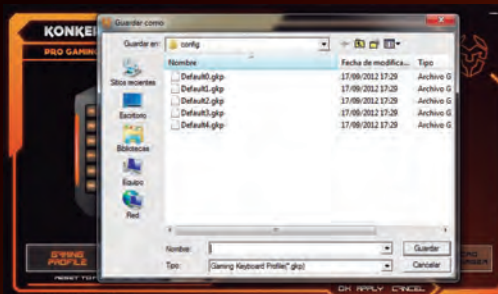


4.3 Save Profile

- 1) Click "Save Profile" for saving the setting to an assigned file.



- 2) Select the assigned file and click "Save" in the pop-up window.
- 3) Click "Apply" to apply the change.





CONFIGURATION OF KEYBOARD

4.4 Edit Game Profile

- 1) Click "Edit Profile" for modifying the personalized PROFILE NAME and PATH to execute game.



- 2) Select the profile to be imported and click "Open".
- 3) Click "Apply" to apply the change.



5. RESET TO DEFAULT

- 1) Click "Reset" on the main skin.



- 2) Click "OK" and reset to default.





SPECIFICATIONS

Keyboard

Key reponse time.....1ms~16ms
USB report rate..... 125Hz/250Hz/500Hz/1000Hz
Silicon life span.....more than 10million
Back to the spring.....≥20g

Bounce time.....5ms(Max)
Working press.....52±5g
Distance.....3±0.2m
Voltage supply.....5.0V±10%
Power supply.....250 mA (Max)

Dimensions 483 x 191.7 x 34.2 mm
Cable Length 1.8M
Plug USB
Net Weight 420g

Accessories List

- | | |
|----------------|-------|
| 1. Keyboard | 1 pc |
| 2. Driver Disk | 1 pc |
| 3. User Manual | 1 pc |
| 4. Package Box | 1 set |

If you have any questions regarding technical problems please
contact us via our website:

www.nox-xtreme.com

KROM reserves the right for any modifications in text and/or images.